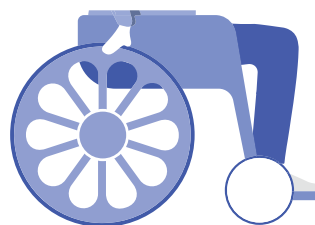
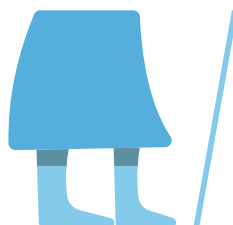


2021 GLOBAL DESIGN COMPETITION

MOVIN'ON
CHALLENGE DESIGN

RESPECT

ENDING ISOLATION AND CONQUERING THE MOBILITY DIVIDE



AGE AND DISABILITY CAN LIMIT ACCESS TO SAFE AND AFFORDABLE MOBILITY FOR ONE OF EVERY FOUR PEOPLE IN THE WORLD TODAY, REDUCING JOY AND THE ABILITY TO FULLY PARTICIPATE IN, BENEFIT FROM, AND CONTRIBUTE TO SOCIETY.

THE 2021 MOVIN'ON CHALLENGE TO ENTRANTS IS TO DESIGN A FUTURE WITH TRULY INCLUSIVE ACCESS TO MOBILITY, A FUTURE THAT BREAKS DOWN BARRIERS AND INCREASES THE PERSONAL WELL-BEING AND RESPECT FOR ALL PEOPLE.

SOME THINGS TO CONSIDER:

- **AGE CAN IMPACT THE ABILITY OF BOTH YOUNG AND OLD PEOPLE TO ACCESS AFFORDABLE AND SUSTAINABLE MOBILITY.**
- **DISABILITY CAN TAKE MANY FORMS, BOTH VISIBLE AND INVISIBLE TO THE OUTSIDE WORLD.**
- **THE COMBINATION OF PHYSICAL OR EMOTIONAL DISABILITY AND LACK OF ACCESS TO MOBILITY OFTEN RESULTS IN ISOLATION, LEADING TO FURTHER WITHDRAWAL FROM SOCIETY.**

THE ENTRY PORTAL FOR SUBMISSIONS WILL OPEN NOVEMBER 1, 2020 AND CLOSE ON MARCH 1, 2021.

FOR MORE INFORMATION, PLEASE VISIT OUR WEBSITE:
WWW.MICHELINCHALLENGEDESIGN.COM



#MCD2021

WWW.MICHELINCHALLENGEDESIGN.COM